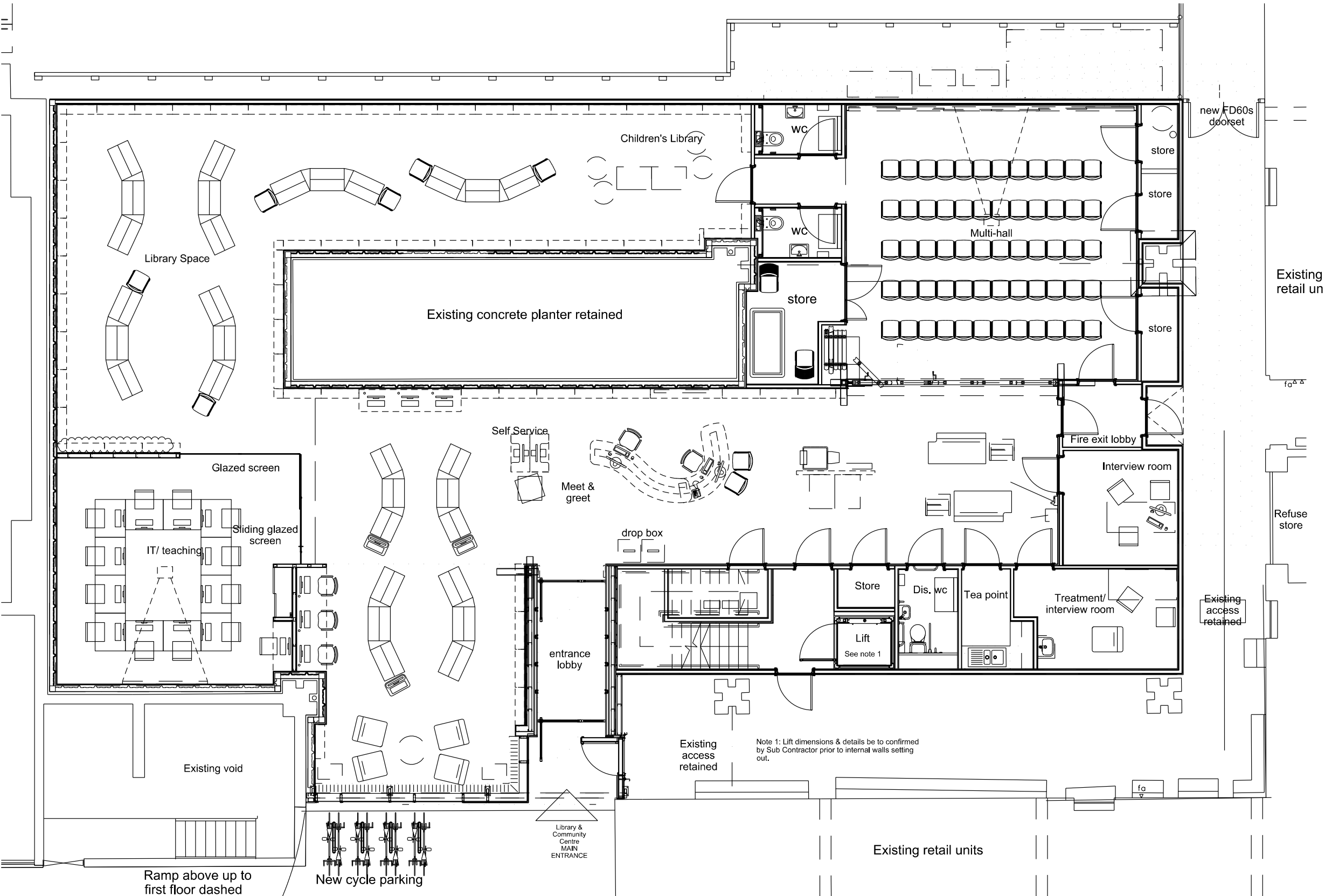




## ARTIZAN STREET LIBRARY ARTS COUNCIL BID

September 2021

# EXISTING PLAN



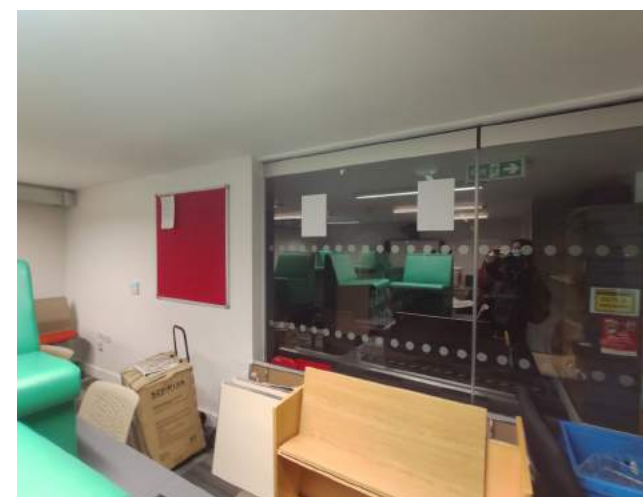
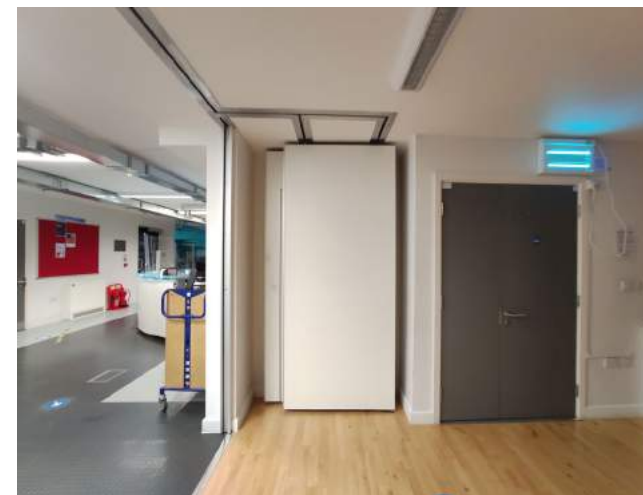
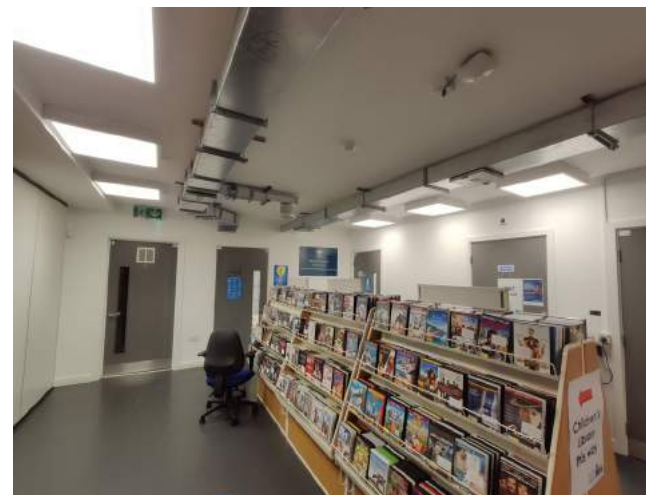
NOT TO SCALE



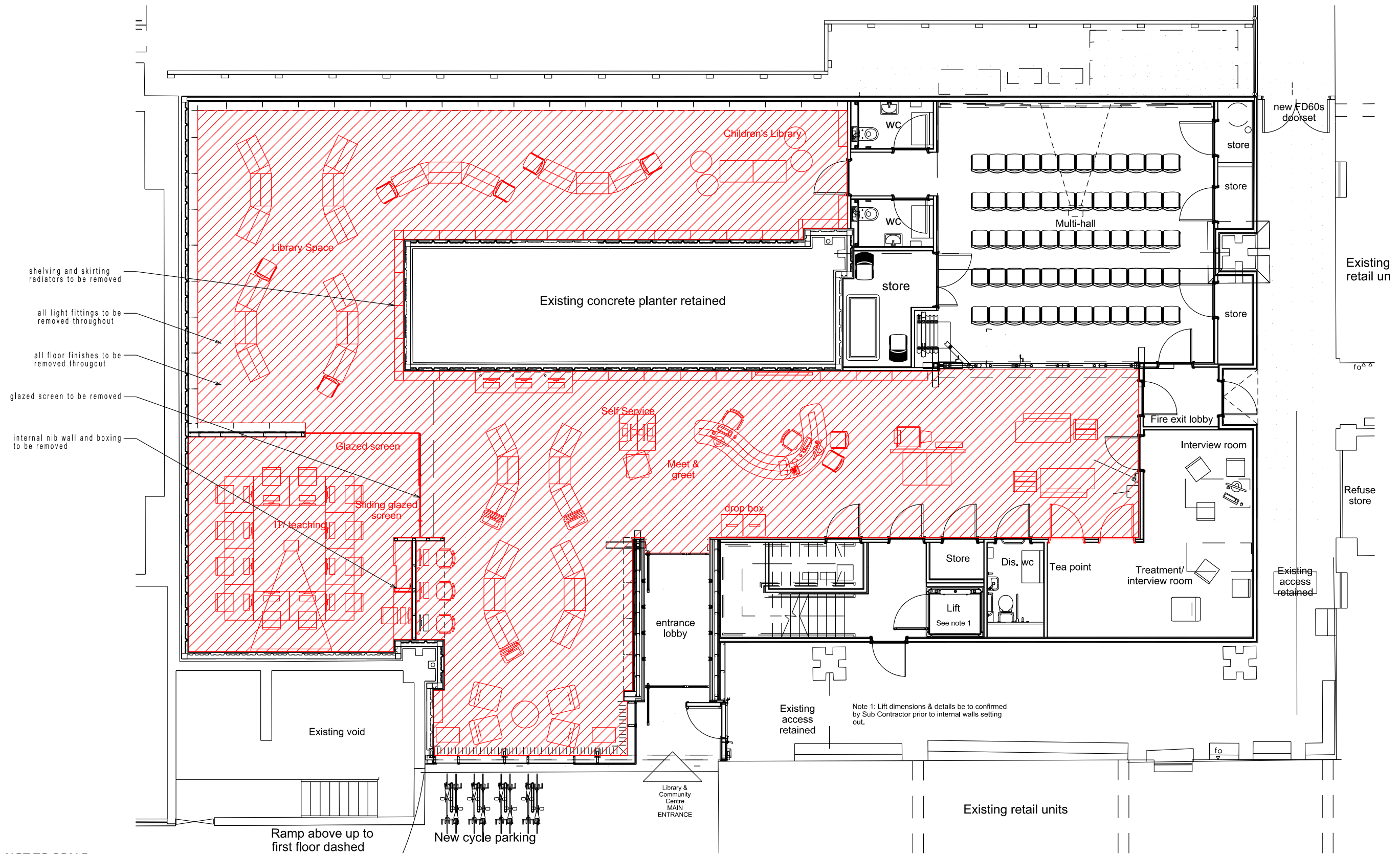
# EXISTING PHOTOS



The existing library is situated over the lower two storeys beneath the Middlesex Estate in the City of London. This bid proposal deals only with the library space, which is situated on the ground floor. The existing library suffers from low ceilings and a lack of daylight. In addition, there is no consistency in the flooring finishes or light fittings, which creates a fragmented and dour interior.



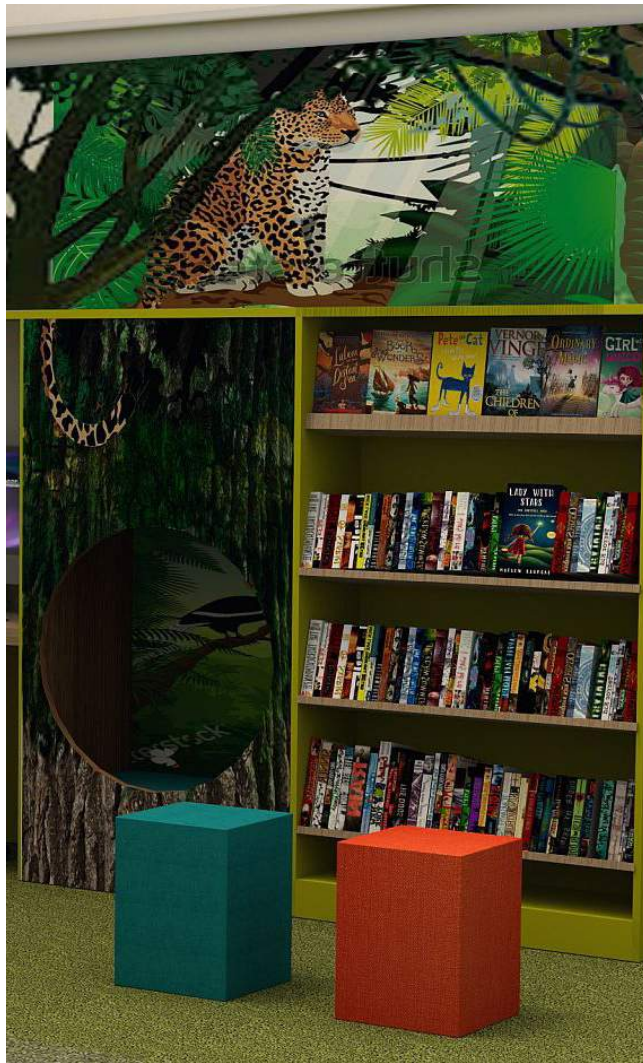
# DEMOLITION PLAN



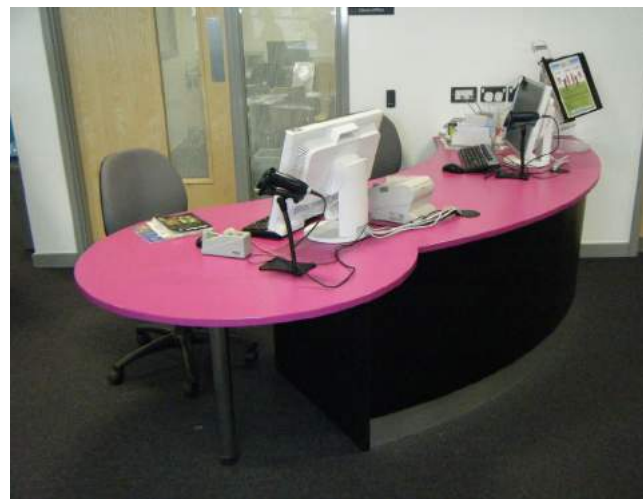
NOT TO SCALE



# PROPOSED FURNITURE

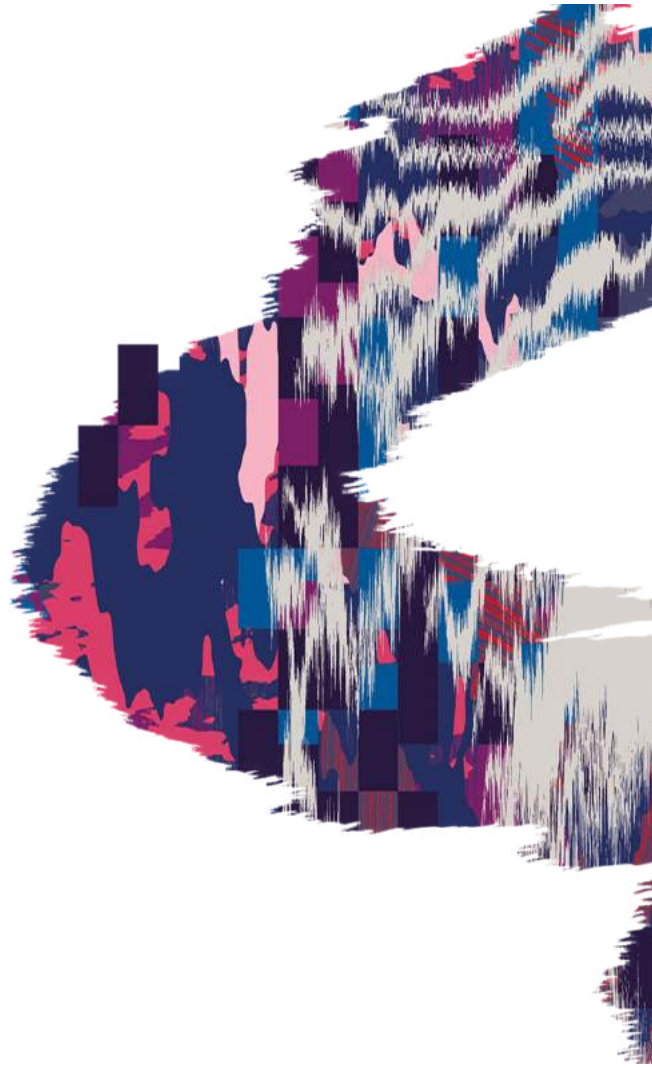


Opening the Book Library Designers have developed a furniture layout to create a feeling of warmth and welcome, different from formal straight rows. The children's area has been renewed and re-located to attract families with young children.





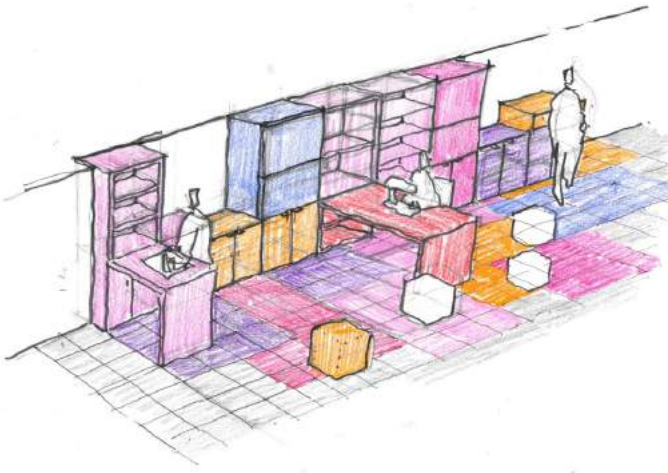
# HUGUENOT INFLUENCE



The Huguenots – French Protestants in the 16th and 17th Century – were this country's first refugees. Many settled in London, primarily in Spitalfields and the City, close to the Artizan Library. They revitalized the silk weaving industry in the area, and created a rich legacy of silk patterns renowned around the world. It is hoped that the new Artizan maker space and lounge will draw upon this history of craftsmanship, supporting upskilling and creativity for the local population.

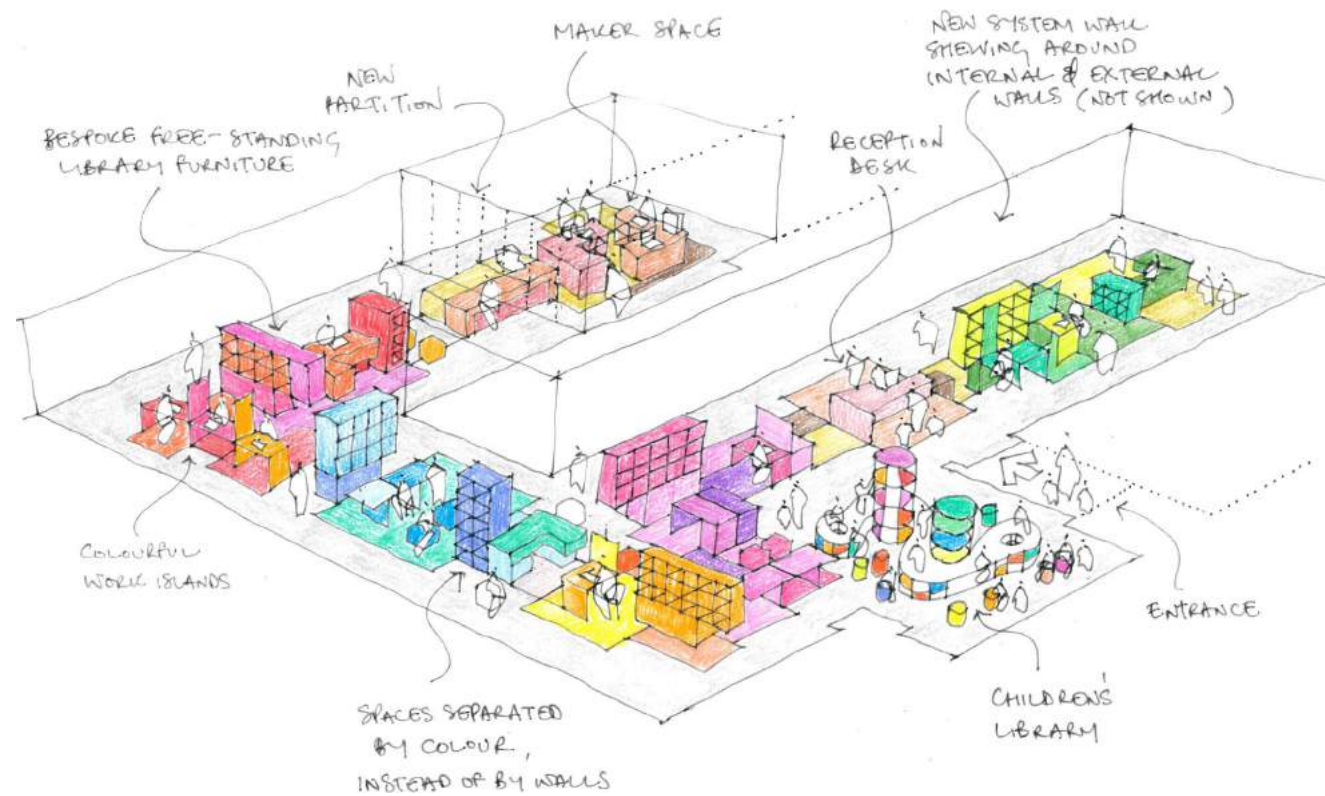






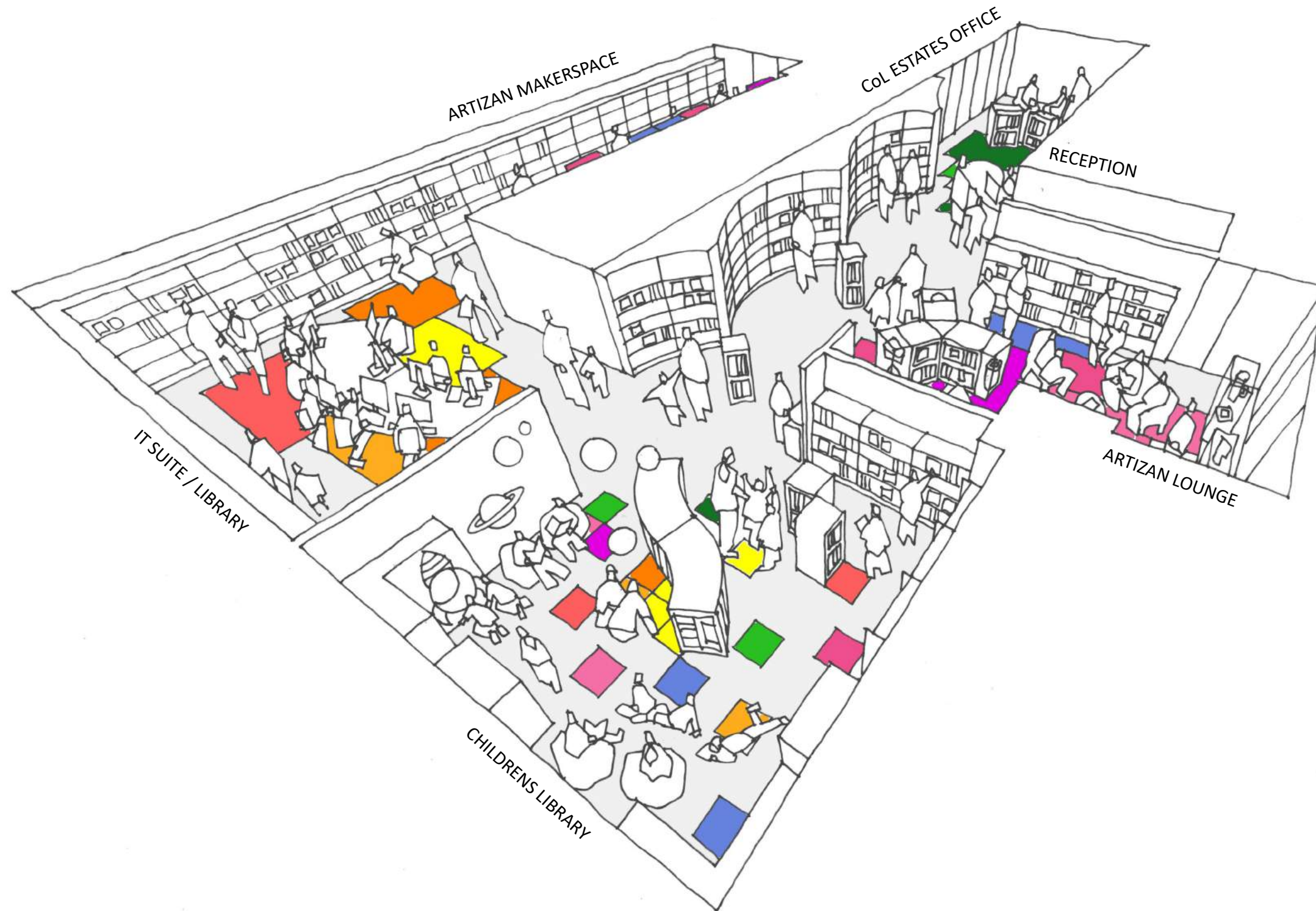
The new design proposes placing a new Artizan Lounge at the front of the library and new Artizan Maker Space at the rear. People will be able to make noise and create pieces of work undisturbed at the rear, whilst their work can be displayed and enjoyed in the lounge. The existing IT suite would be removed and the space re-purposed as the children's library.

The different areas of the library would be separated by colour instead of walls, and the children's library would be a kaleidoscopic celebration of learning!





# ARTIZAN LIBRARY - SKETCH VIEW





# ARTIZAN MAKER SPACE - SKETCH VIEW



A series of coloured cabinets with fold-down tables and desks at varying heights would allow the creation of new maker spaces. This would allow embroidery, sewing, digital printing and other activities to take place. Equipment and materials would be safely secured in the furniture once closed, and the bold vibrant colours of the furniture and flooring would match the colours of the Artizan Lounge at the front of the library, creating a strong visual link between the two spaces.





#### General Notes:

1. All dimensions to be checked on site.
2. Do not scale from this drawing.
3. Drawing to be read in conjunction with all other relevant SCA and consultant information.

© Copyright: neither this document or any information it contains may be copied or communicated to third parties without written permission from SCA

P02	REVISED DWG	JV	AD	20.09.21
P01	PRELIMINARY ISSUE	JV	AD	07.09.21
Rev	Notes	BY	Check	Date
REVISIONS				

**reForm**  
ARCHITECTS

The Old School, 48a Union Street, London, SE1 1TD  
Tel 020 3696 5700  
enquiries@reForm-architects.london

Drawing Status: PRELIMINARY

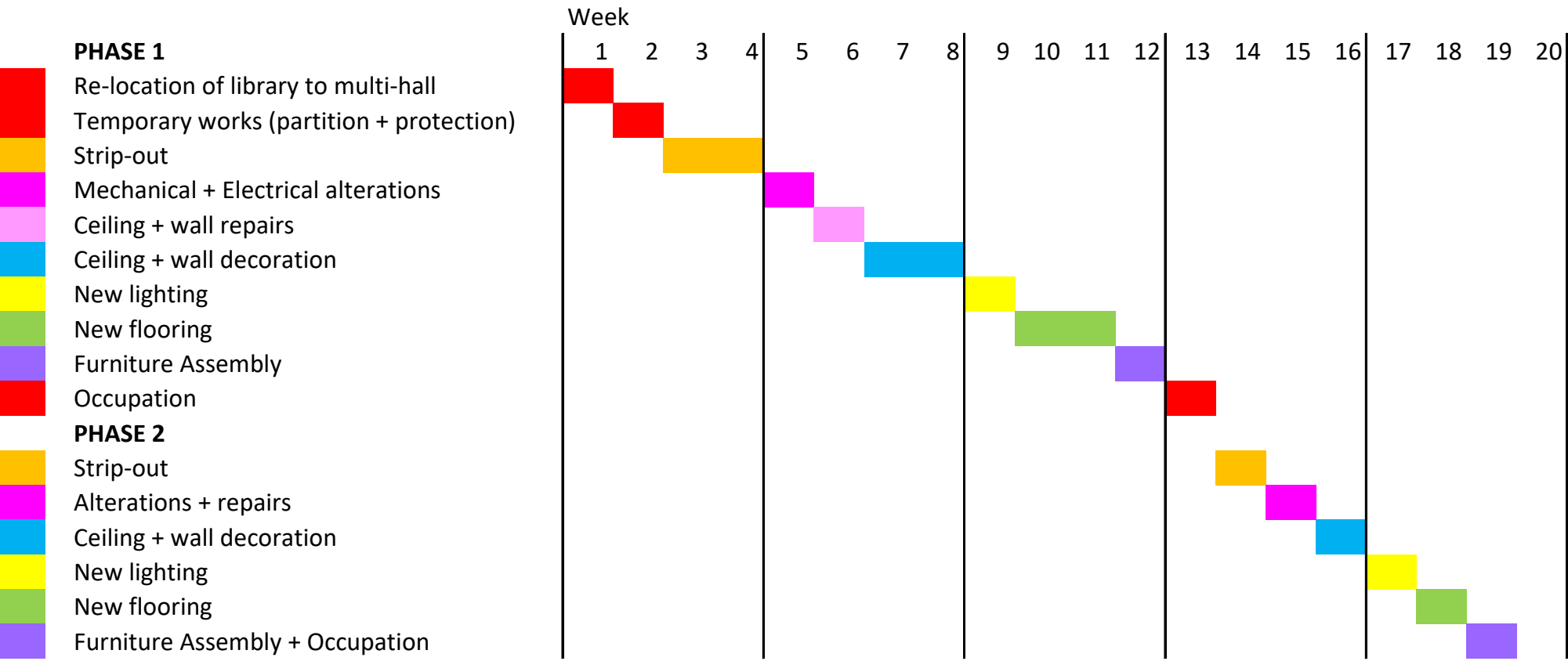
Project:  
Artizan Street Library  
Drawing Title:  
Proposed General Arrangement Drawing

job no.	drawing no.	revision	stage
692	(20)_200	02	02
scales	size	drawn	date
1:100	A3	JV	20.09.21



# PROGRAMME

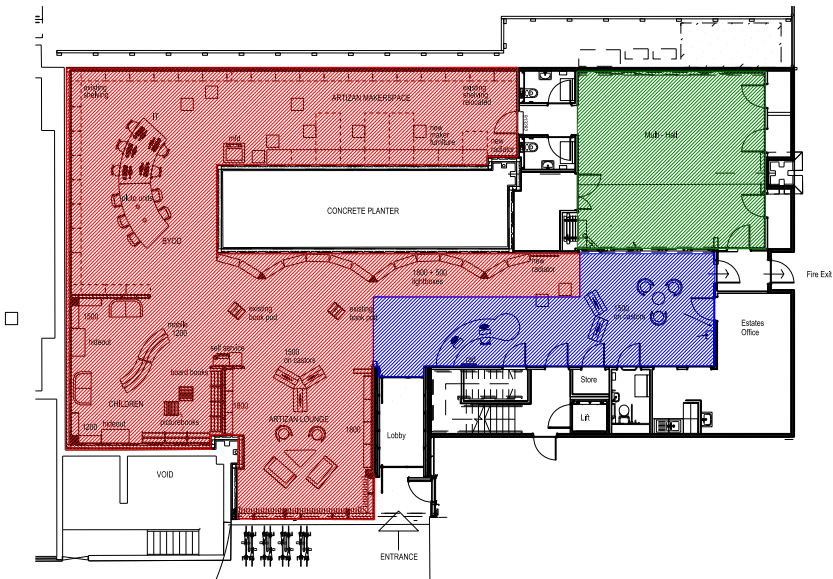
## INDICATIVE OVERALL PROJECT PROGRAMME



An indicative programme is provided below showing an anticipated timetable for the construction phase of the project.

The programme assumes that a temporary library could be provided in the multi-hall during phase 1, and that the existing estates office could remain in use. During phase 2 the estates office would need to be provided with alternative temporary accommodation. The programme anticipates the closure of the library for 2 weeks at the start of the project, and for 1 week at the end of phase 1.

- PHASE 1
- PHASE 2
- TEMPORARY LIBRARY





# ARTIZAN STREET LIBRARY APPENDICES

# SCHEDULE OF WORKS

**PROJECT: ARTIZAN STREET LIBRARY**

**DATE: SEPTEMBER 2021**

**STATUS:**



## CONTENTS

<b>0</b>	<b>General</b>
<b>1</b>	<b>Demolition</b>
<b>2</b>	<b>External Windows and Doors</b>
<b>3</b>	<b>Internal Walls</b>
<b>4</b>	<b>Ceilings</b>
<b>5</b>	<b>Flooring</b>
<b>6</b>	<b>Fixtures, Fittings &amp; Joinery</b>
<b>7</b>	<b>Decorating</b>
<b>8</b>	<b>Mechanical</b>
<b>9</b>	<b>Electrical</b>

## CONTACTS

### Design Team

#### CLIENT / PRINCIPAL DESIGNER:

City of London Corporation  
Guildhall  
London  
EC2P 2EJ

#### ARCHITECT:

Reform Architects  
The Old School  
48A Union Street  
London SE1 1TD

#### LIBRARY DESIGNER:

Opening the Book  
80 Carleton Road  
Pontefract  
West Yorkshire  
WF8 3NQ



## **0 GENERAL**

### **Description of existing building**

The Artizan Street Library is a two storey library, situated at the entrance level of the Middlesex Estate, in the Portsoken Ward of the City of London. The building is not listed. The façade is predominantly glazed curtain walling, fronting Artizan Street. Internally, the library includes general reading areas, an IT suite, flexible hall spaces for hire and a number of offices for the Middlesex Estate.

### **Description of the works.**

An application for a small capital grant from the Libraries Improvement Fund (LIF) has been submitted, for just below £200k, in order to fund the refurbishment of the library on ground floor only. The works will include removal of the existing IT suite, provision of a new maker space with equipment, and providing new loose furniture, lighting and flooring.

We are intending to undertake the works in two phases, in order to avoid unnecessary disruption to the estates office and the library. The existing multi purpose hall on the ground floor may be used as a temporary library during the works.

### **Drawings**

The following documents are to be read in conjunction with this schedule of works.

210923\_Artizan Street Library  
210923\_Artizan Street Library Programme  
692\_(00)\_200  
692\_(20)\_200  
692\_(DEM)\_200

Additional documents to be provided by Opening the Book.

## **1 DEMOLITION**

Refer to drawing 692\_(DEM)\_200

The Contractor is to provide all necessary support to the existing structure during and after demolition, and throughout construction.

Services that will be affected by the works: Locate and mark positions, include for all propping and all temporary works, fixings, making good to existing structure and finishes where disturbed, and any associated works.

### **Internal**

All existing floor finishes to be removed

All existing lighting to be removed, ceilings to be made good where disturbed

Existing glazing from former IT suite to be removed

Existing nib wall, and boxing in former IT suite to be removed

Existing furniture to be removed and stored throughout works

Existing bookshelves and skirting radiator around internal concrete planter.

## **2 EXTERNAL WINDOWS AND DOORS**

Existing Windows and Doors to be protected throughout works and made good where disturbed.

New window manifestations with Huguenot inspired patterns. Custom design.

## **3 INTERNAL WALLS**

Internal walls to be protected throughout works and made good where disturbed.

## **4 CEILINGS**

Ceilings to be protected throughout works and made good where disturbed.

## **5 FLOORING**

Refer to drawing 692\_(20)\_200

### **New Coloured Carpet Tiles**

Maximum of 10No. colours.

Size: 50x50cm



Manufacturer: Flooring Hut

Carpet Style: Tufted Loop Pile Tile

Backing: 100% Envirobase

Pile Height: 3.5mm

Wear Classification: General Usage

Tile Thickness: 6mm

Laying Style: Chequerboard

### **Accessories**

Lobby entrance mat to sit flush with internal carpet

Threshold Strips TBC

## **10 FIXTURES, FITTINGS & JOINERY**

### **Makerspace Furniture**

New makerspace furniture to be constructed of moisture resistant MDF, powder coated, fixings and joints not visible where possible.

## **11 DECORATING**

### **Walls**

Manufacturer: Dulux Trade

Product: 2 full coats of Diamond High Performance Eggshell

Colour: Brilliant White

### **Ceilings**

Manufacturer: Dulux Trade

Product: 2 full coats of Diamond High Performance Eggshell

Colour: Brilliant White

### **Internal Timber Finishes (where applicable)**

Manufacturer: Dulux Trade

Product: 2 full coats of Oil Based High Gloss

Colour: Brilliant White

All decorating to be to manufacturer's guidelines.

The contractor must suitably protect all existing surfaces from damage during the works.

The contractor must notify existing tenants and visitors when there are areas of 'wet paint' in the building.

## **12 MECHANICAL**

2No. new radiators connected to existing hot water valves

## **13 ELECTRICAL**

### **32No. New Spot Lights (TBC)**

Manufacturer: Solus Lighting

Product: Dash AC SD

### **1No. New Feature Light (TBC)**

Manufacturer: Solus Lighting

Product: Ride Ring System

Provision is to be allowed for the repositioning of any electrical sockets or switches to allow for the new layout.



Artizan Street Library  
Fit-out Costing  
02.07.2021

item	quantity	unit	price/m2	sub-total	prelims (25%)	total
<b>Internal</b>						
Strip-out	264	m2	25	6,600	1,650	8,250
Mechanical Alterations	1	it		1,500	375	1,875
Electrical Alterations	1	it		1,500	375	1,875
Decoration of walls and doors	264	m2	10	2,640	660	3,300
Decoration of ceilings	264	m2	10	2,640	660	3,300
New flooring	264	m2	44	11,616	2,904	14,520
Maker space joinery	1	it		21,000	5,250	26,250
<b>Services</b>						
New lighting - library	32	it		5,217	1,304	6,521
New lighting - feature lighting in Artizan lounge	6	it		6,771	1,693	8,464
New lighting - installation	1	it		3,200	800	4,000
<b>Design Fees</b>						
Architect Fees	1	it		20,909		20,909
<b>TOTAL</b>				83,593	15,671	99,264

**Exclusions:**

Asbestos removal excluded  
New wiring excluded  
Access control excluded  
Fire alarm works excluded  
Signage excluded  
Works to structure / drainage etc excluded  
No works to wc's, stores, offices or multi-hall  
Equipment  
All prices excluding VAT